

\$249,000 - 402 10528 77 Avenue, Edmonton

MLS® #E4430908

\$249,000

2 Bedroom, 2.00 Bathroom, 961 sqft

Condo / Townhouse on 0.00 Acres

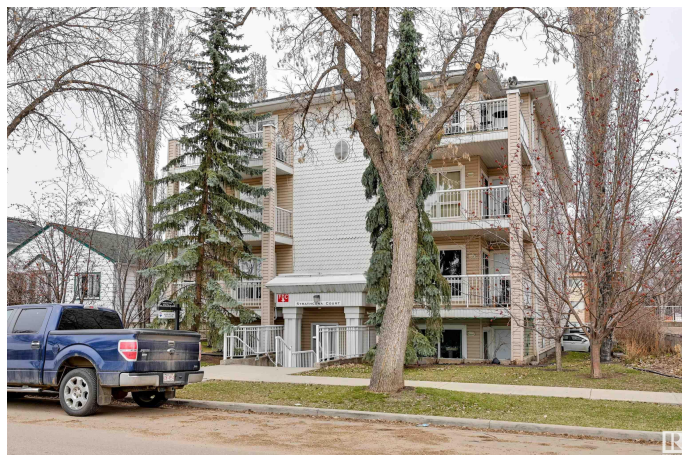
Queen Alexandra, Edmonton, AB

PARK VIEWS from this TOP FLOOR
RENOVATED 2 bedroom 2 bathroom
CORNER UNIT facing SOUTHWEST with a wrap around balcony located across from a school park, close to Whyte Avenue, transportation, the U of A & the U of A Hospital. Lots of natural light with an open concept floor plan. New refaced white cabinetry with white appliances & a window over the sink with west views. Corner linear electric fireplace in the living room. Brand new paint. Laminate flooring throughout except for tile in the kitchen & bathrooms. The primary bedroom suite has 2 closets & a full ensuite bathroom. Main 3 piece bathroom. Included is the stove, microwave hood fan, fridge, dishwasher, INSUITE WASHER & DRYER, blinds & A/C. Assigned covered parking and extra storage. 18+ building. Shows very well!

Built in 2000

Essential Information

MLS® #	E4430908
Price	\$249,000
Bedrooms	2
Bathrooms	2.00
Full Baths	2
Square Footage	961
Acres	0.00



Year Built	2000
Type	Condo / Townhouse
Sub-Type	Lowrise Apartment
Style	Single Level Apartment
Status	Active

Community Information

Address	402 10528 77 Avenue
Area	Edmonton
Subdivision	Queen Alexandra
City	Edmonton
County	ALBERTA
Province	AB
Postal Code	T6E 1N1

Amenities

Amenities	Air Conditioner, Deck, Intercom, Security Door, Storage-Locker Room, Natural Gas BBQ Hookup
Parking Spaces	1
Parking	Stall

Interior

Interior Features	ensuite bathroom
Appliances	Air Conditioning-Central, Dishwasher-Built-In, Dryer, Microwave Hood Fan, Refrigerator, Stove-Electric, Washer, See Remarks
Heating	Forced Air-1, Natural Gas
Fireplace	Yes
Fireplaces	Corner, Mantel, See Remarks
# of Stories	4
Stories	1
Has Basement	Yes
Basement	None, No Basement

Exterior

Exterior	Wood, Vinyl
Exterior Features	Playground Nearby, Public Transportation, Schools, Shopping Nearby, See Remarks
Roof	Asphalt Shingles
Construction	Wood, Vinyl

Foundation Concrete Perimeter

Additional Information

Date Listed April 15th, 2025
Days on Market 5
Zoning Zone 15
Condo Fee \$563

DATA IS DEEMED RELIABLE BUT IS NOT GUARANTEED ACCURATE BY THE REALTORS® ASSOCIATION OF EDMONTON. COPYRIGHT 2025 BY THE REALTORS® ASSOCIATION OF EDMONTON. ALL RIGHTS RESERVED.Trademarks are owned or controlled by the Canadian Real Estate Association (CREA) and identify real estate professionals who are members of CREA (REALTOR®, REALTORS®) and/or the quality of services they provide (MLS®, Multiple Listing Service®)
Listing information last updated on April 19th, 2025 at 10:32pm MDT