

# \$199,800 - 114 11915 106 Avenue, Edmonton

MLS® #E4428793

**\$199,800**

2 Bedroom, 2.00 Bathroom, 1,072 sqft  
Condo / Townhouse on 0.00 Acres

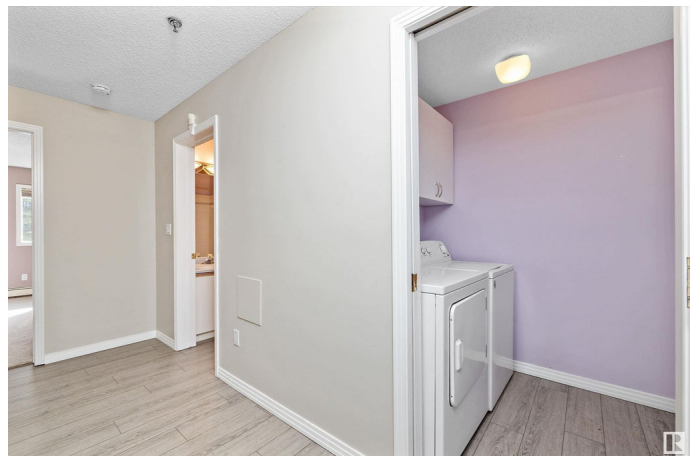
Queen Mary Park, Edmonton, AB

Welcome to stress-free living in the heart of Edmonton's Brewery District! This beautifully maintained main-floor condo offers 1,100 sq. ft. of bright, open-concept living—perfect for entertaining. The SPACIOUS LIVING ROOM flows effortlessly to your private BALCONY, ideal for morning coffee or evening relaxation. You'll love the TWO generous bedrooms, including a primary suite with 5-PC ENSUITE BATH, plus a second full 4-PC bathroom, in-suite laundry, and plenty of storage. This fantastic unit also comes with a TITLED UNDERGROUND PARKING stall! The building has incredible amenities: a huge fitness center with city views, social room with a pool table, car wash bay, and underground bicycle parking. Steps from shopping, dining, MacEwan University, NAIT, Rogers Place, River Valley and public transit—this location is unbeatable. Move in and enjoy!

Built in 1993

## Essential Information

|            |           |
|------------|-----------|
| MLS® #     | E4428793  |
| Price      | \$199,800 |
| Bedrooms   | 2         |
| Bathrooms  | 2.00      |
| Full Baths | 2         |



|                |                        |
|----------------|------------------------|
| Square Footage | 1,072                  |
| Acres          | 0.00                   |
| Year Built     | 1993                   |
| Type           | Condo / Townhouse      |
| Sub-Type       | Lowrise Apartment      |
| Style          | Single Level Apartment |
| Status         | Active                 |

### **Community Information**

|             |                      |
|-------------|----------------------|
| Address     | 114 11915 106 Avenue |
| Area        | Edmonton             |
| Subdivision | Queen Mary Park      |
| City        | Edmonton             |
| County      | ALBERTA              |
| Province    | AB                   |
| Postal Code | T5H 0S2              |

### **Amenities**

|                |  |
|----------------|--|
| Amenities      | Car Wash, Detectors Smoke, Parking-Visitor, Secured Parking, Security Door |
| Parking Spaces | 1  |
| Parking        | Underground  |

### **Interior**

|                   |   |
|-------------------|---|
| Interior Features | ensuite bathroom  |
| Appliances        | Dishwasher-Built-In, Dryer, Garage Opener, Microwave Hood Fan, Refrigerator, Stove-Electric, Washer, Window Coverings |
| Heating           | Baseboard, Hot Water, Natural Gas   |
| # of Stories      | 3   |
| Stories           | 1   |
| Has Basement      | Yes   |
| Basement          | None, No Basement   |

### **Exterior**

|                   |   |
|-------------------|---|
| Exterior          | Wood, Stucco  |
| Exterior Features | Backs Onto Park/Trees, Fenced, Golf Nearby, Landscaped, Paved Lane, Playground Nearby, Public Transportation, Shopping Nearby |
| Roof              | Asphalt Shingles  |
| Construction      | Wood, Stucco  |

Foundation            Concrete Perimeter

**Additional Information**

Date Listed            April 3rd, 2025

Days on Market      14

Zoning                 Zone 08

Condo Fee             \$624

DATA IS DEEMED RELIABLE BUT IS NOT GUARANTEED ACCURATE BY THE REALTORS® ASSOCIATION OF EDMONTON. COPYRIGHT 2025 BY THE REALTORS® ASSOCIATION OF EDMONTON. ALL RIGHTS RESERVED. Trademarks are owned or controlled by the Canadian Real Estate Association (CREA) and identify real estate professionals who are members of CREA (REALTOR®, REALTORS®) and/or the quality of services they provide (MLS®, Multiple Listing Service®)

Listing information last updated on April 17th, 2025 at 5:47am MDT