

## \$849,900 - 6 Lafleur Drive, St. Albert

MLS® #E4428530

### \$849,900

4 Bedroom, 3.00 Bathroom, 1,812 sqft  
Single Family on 0.00 Acres

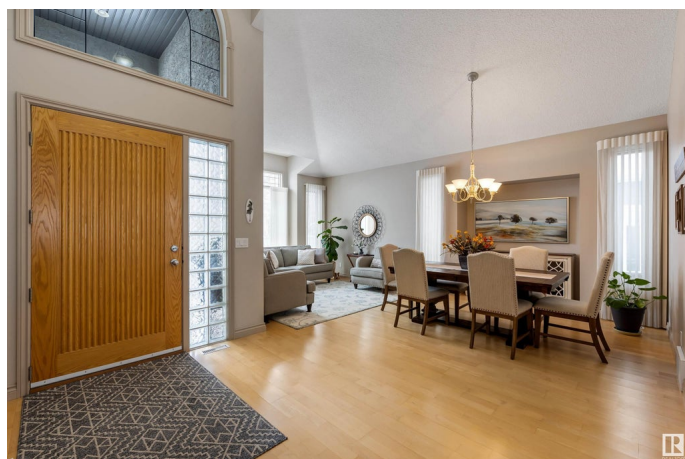
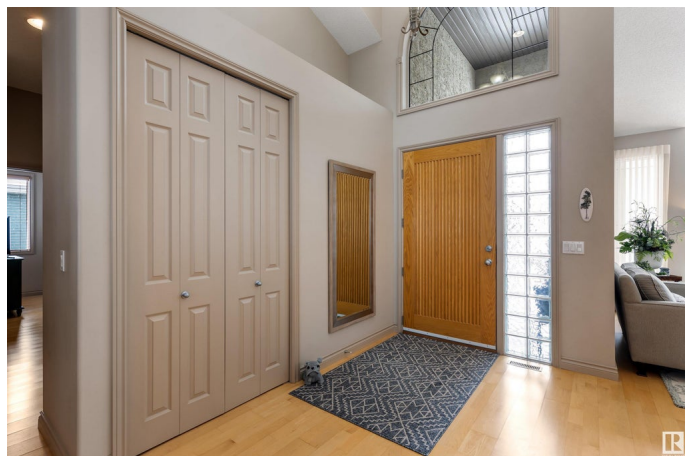
Lacombe Park, St. Albert, AB

This stunning 1811 sqft bungalow is nestled in desirable Lacombe Park Estates, backing south onto a picturesque park! Featuring 4 bedrooms, the home boasts a spacious front entrance that leads into the inviting living & dining rooms, where vaulted ceilings, custom framing & large windows create an open airy feel. The kitchen is a true chef's paradise, equipped w/ a large island, corner pantry, granite countertops, newer s/s appliances (including dual ovens), tile backsplash, & a fantastic view of the park. The expansive great room offers a cozy gas f/p, surrounded by stacked stone that stretches up to the vaulted ceiling. The primary bedroom is a tranquil retreat w/ a generous walk-in closet & a luxurious 5pce ensuite. A 2nd bedroom (or office), a 4pce bath & convenient main-floor laundry complete the main level. Downstairs, the fully finished basement features 2 large bedrooms, a 3pce bath & a rec room w/ a 2nd gas f/p. Double attached garage is HEATED & includes a floor drain & hot & cold water.

Built in 2001

### Essential Information

MLS® #	E4428530
Price	\$849,900
Bedrooms	4



Bathrooms	3.00
Full Baths	3
Square Footage	1,812
Acres	0.00
Year Built	2001
Type	Single Family
Sub-Type	Detached Single Family
Style	Bungalow
Status	Active

### Community Information

Address	6 Lafleur Drive
Area	St. Albert
Subdivision	Lacombe Park
City	St. Albert
County	ALBERTA
Province	AB
Postal Code	T8N 5Y1

### Amenities

Amenities	Deck, Vaulted Ceiling, Vinyl Windows, See Remarks
Parking	Double Garage Attached

### Interior

Interior Features	ensuite bathroom
Appliances	Air Conditioning-Central, Alarm/Security System, Dishwasher-Built-In, Dryer, Garage Control, Garage Opener, Garburator, Hood Fan, Oven-Microwave, Refrigerator, Stove-Electric, Vacuum System Attachments, Vacuum Systems, Washer, Window Coverings
Heating	Forced Air-1, Natural Gas
Fireplace	Yes
Fireplaces	Corner, Mantel
Stories	2
Has Basement	Yes
Basement	Full, Finished

### Exterior

Exterior	Wood, Stucco
Exterior Features	Backs Onto Park/Trees, Fenced, Landscaped, Private Setting, Public

	Transportation, Schools, Shopping Nearby, See Remarks
Roof	Asphalt Shingles
Construction	Wood, Stucco
Foundation	Concrete Perimeter

### **Additional Information**

Date Listed	April 2nd, 2025
Days on Market	2
Zoning	Zone 24

DATA IS DEEMED RELIABLE BUT IS NOT GUARANTEED ACCURATE BY THE REALTORS® ASSOCIATION OF EDMONTON. COPYRIGHT 2025 BY THE REALTORS® ASSOCIATION OF EDMONTON. ALL RIGHTS RESERVED. Trademarks are owned or controlled by the Canadian Real Estate Association (CREA) and identify real estate professionals who are members of CREA (REALTOR®, REALTORS®) and/or the quality of services they provide (MLS®, Multiple Listing Service®)

Listing information last updated on April 4th, 2025 at 10:32am MDT