

\$469,900 - 16452 15 Avenue, Edmonton

MLS® #E4428178

\$469,900

3 Bedroom, 2.50 Bathroom, 1,525 sqft
Single Family on 0.00 Acres

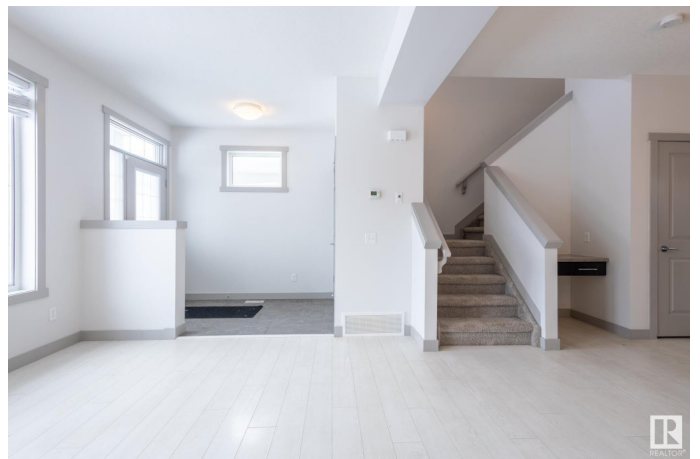
Glenriding Heights, Edmonton, AB

Live in comfort and style in this inviting 3-bedroom, 2.5-bathroom home located in the desirable community of Glenriding. Step inside to a modern open-concept layout featuring a sleek kitchen with dark and modern cabinetry, with ample counter space, perfect for culinary enthusiasts. The spacious living area boasts a cozy fireplace, creating a warm and welcoming ambiance. Upstairs, the primary bedroom offers a private ensuite and a relaxing soak tub, while two additional bedrooms provide versatility for family or office space. Enjoy the convenience of an upper-floor laundry room. Outside, the fully fenced backyard features a charming gazebo-covered deck, ideal for year-round enjoyment. With a detached double garage and proximity to parks, schools, and amenities, this home offers convenience. Welcome to Glenriding – welcome home, friends!

Built in 2014

Essential Information

MLS® #	E4428178
Price	\$469,900
Bedrooms	3
Bathrooms	2.50
Full Baths	2
Half Baths	1



Square Footage	1,525
Acres	0.00
Year Built	2014
Type	Single Family
Sub-Type	Detached Single Family
Style	2 Storey
Status	Active

Community Information

Address	16452 15 Avenue
Area	Edmonton
Subdivision	Glenridding Heights
City	Edmonton
County	ALBERTA
Province	AB
Postal Code	T5R 3G8

Amenities

Amenities	Ceiling 9 ft., Deck, Detectors Smoke, No Smoking Home
Parking Spaces	2
Parking	Double Garage Detached

Interior

Interior Features	ensuite bathroom
Appliances	Dishwasher-Built-In, Dryer, Garage Control, Garage Opener, Microwave Hood Fan, Refrigerator, Stove-Electric, Washer, Window Coverings
Heating	Forced Air-1, Natural Gas
Fireplace	Yes
Fireplaces	Tile Surround
Stories	2
Has Basement	Yes
Basement	Full, Unfinished

Exterior

Exterior	Wood, Stone, Vinyl
Exterior Features	Airport Nearby, Fenced, Golf Nearby, Partially Landscaped, Playground Nearby, Public Swimming Pool, Public Transportation, Schools, Shopping Nearby
Roof	Asphalt Shingles

Construction Wood, Stone, Vinyl
Foundation Concrete Perimeter

Additional Information

Date Listed March 29th, 2025
Days on Market 5
Zoning Zone 56

DATA IS DEEMED RELIABLE BUT IS NOT GUARANTEED ACCURATE BY THE REALTORS® ASSOCIATION OF EDMONTON. COPYRIGHT 2025 BY THE REALTORS® ASSOCIATION OF EDMONTON. ALL RIGHTS RESERVED. Trademarks are owned or controlled by the Canadian Real Estate Association (CREA) and identify real estate professionals who are members of CREA (REALTOR®, REALTORS®) and/or the quality of services they provide (MLS®, Multiple Listing Service®)

Listing information last updated on April 2nd, 2025 at 9:31pm MDT