

\$149,900 - 130 592 Hooke Road, Edmonton

MLS® #E4426980

\$149,900

1 Bedroom, 1.00 Bathroom, 701 sqft

Condo / Townhouse on 0.00 Acres

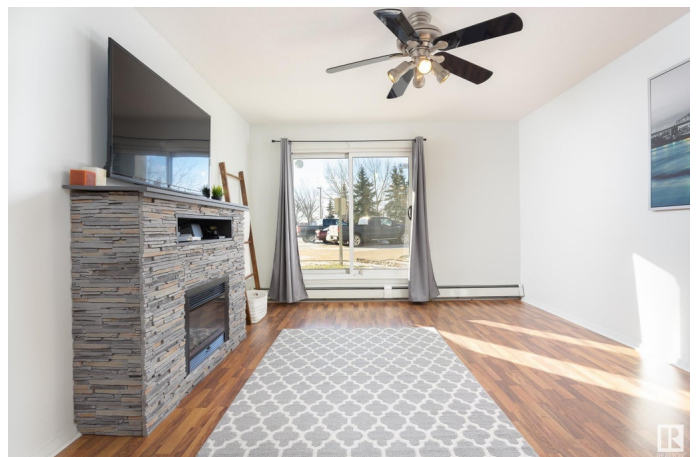
Canon Ridge, Edmonton, AB

Welcome to this main floor 1-bedroom, 1-bathroom condo in the Ravines at Hermitage! Perfectly positioned next to Kennedale Ravine, this condo offers easy access to beautiful walking trails, the river and Hermitage Dog Park. Featuring an open concept living area and kitchen, in suite laundry and a cozy fireplace, as well as, a titled underground parking space with an attached storage unit, providing added convenience and security. Close proximity to all essential amenities, including shopping, dining, and recreational facilities, with quick access to the Anthony Henday and Yellowhead Trail for easy commuting. This property is perfect for a first-time homebuyer, investor, or anyone looking to downsize and embrace the simplicity of condo living.

Built in 2003

Essential Information

MLS® #	E4426980
Price	\$149,900
Bedrooms	1
Bathrooms	1.00
Full Baths	1
Square Footage	701
Acres	0.00
Year Built	2003



Type	Condo / Townhouse
Sub-Type	Lowrise Apartment
Style	Single Level Apartment
Status	Active

Community Information

Address	130 592 Hooke Road
Area	Edmonton
Subdivision	Canon Ridge
City	Edmonton
County	ALBERTA
Province	AB
Postal Code	T5A 5H2

Amenities

Amenities	Parking-Visitor, Party Room, Patio, Recreation Room/Centre, Secured Parking, Storage Cage
Parking	Heated, Underground

Interior

Appliances	Dishwasher-Built-In, Dryer, Hood Fan, Refrigerator, Stove-Electric, Washer
Heating	Baseboard, Natural Gas
Fireplace	Yes
Fireplaces	Insert
# of Stories	4
Stories	4
Has Basement	Yes
Basement	None, No Basement

Exterior

Exterior	Wood, Stucco, Vinyl
Exterior Features	Backs Onto Park/Trees
Roof	Asphalt Shingles
Construction	Wood, Stucco, Vinyl
Foundation	Concrete Perimeter

Additional Information

Date Listed	March 20th, 2025
-------------	------------------

Days on Market	30
Zoning	Zone 35
Condo Fee	\$425

DATA IS DEEMED RELIABLE BUT IS NOT GUARANTEED ACCURATE BY THE REALTORS® ASSOCIATION OF EDMONTON. COPYRIGHT 2025 BY THE REALTORS® ASSOCIATION OF EDMONTON. ALL RIGHTS RESERVED. Trademarks are owned or controlled by the Canadian Real Estate Association (CREA) and identify real estate professionals who are members of CREA (REALTOR®, REALTORS®) and/or the quality of services they provide (MLS®, Multiple Listing Service®)

Listing information last updated on April 19th, 2025 at 7:17pm MDT