

Courtesy Of Marc Chalifoux Of One Percent Realty

\$359,900 - N/A, Edmonton

MLS® #E4426124

\$359,900

4 Bedroom, 2.50 Bathroom, 1,379 sqft
Condo / Townhouse on 0.00 Acres

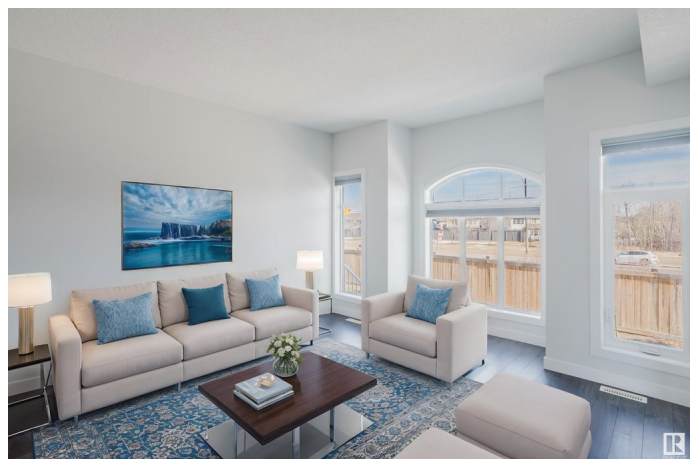
Windermere, Edmonton, AB

Welcome to The Regency at Windermere Townhomes! Experience luxury living in one of Edmonton's most sought-after communities. This complex is conveniently located near Anthony Henday, 170th St, Edmonton International Airport, and The Currents at Ambleside shopping center. Enjoy easy access to shopping, amenities, and major transportation routes. This stunning 2-storey townhome features nearly 2000 sq ft of open-concept living space with 9' ceilings, quartz counter tops, engineered hardwood, 2.5 baths (including a 4-piece master bath), 3 spacious bedrooms, and large windows with bay windows in the living area and master bedroom. Ground level is partially finished with a potential fourth bedroom, office or flex space with an additional partially finished bathroom with radiant heated floor. The complex is fully landscaped, oversized double attached 20 ft wide garage, and recent upgrades including a new hot water tank, range/stove, and dishwasher make this home a perfect choice!

Built in 2014

Essential Information

MLS® #	E4426124
Price	\$359,900
Bedrooms	4



Bathrooms	2.50
Full Baths	2
Half Baths	1
Square Footage	1,379
Acres	0.00
Year Built	2014
Type	Condo / Townhouse
Sub-Type	Townhouse
Style	2 Storey
Status	Active

Community Information

Address	N/A
Area	Edmonton
Subdivision	Windermere
City	Edmonton
County	ALBERTA
Province	AB
Postal Code	T6W 2N6

Amenities

Amenities	Detectors Smoke
Parking	Double Garage Attached

Interior

Interior Features	ensuite bathroom
Appliances	Air Conditioning-Central, Dishwasher-Built-In, Dryer, Garage Control, Garage Opener, Microwave Hood Fan, Stove-Electric, Washer, Window Coverings
Heating	Forced Air-1, Natural Gas
Stories	2
Has Basement	Yes
Basement	Partial, Partially Finished

Exterior

Exterior	Wood, Stucco
Exterior Features	Low Maintenance Landscape, Playground Nearby, Public Transportation, Shopping Nearby
Roof	Asphalt Shingles

Construction	Wood, Stucco
Foundation	Concrete Perimeter

Additional Information

Date Listed	March 17th, 2025
-------------	------------------

Days on Market	18
----------------	----

Zoning	Zone 56
--------	---------

Condo Fee	\$345
-----------	-------

DATA IS DEEMED RELIABLE BUT IS NOT GUARANTEED ACCURATE BY THE REALTORS® ASSOCIATION OF EDMONTON. COPYRIGHT 2025 BY THE REALTORS® ASSOCIATION OF EDMONTON. ALL RIGHTS RESERVED. Trademarks are owned or controlled by the Canadian Real Estate Association (CREA) and identify real estate professionals who are members of CREA (REALTOR®, REALTORS®) and/or the quality of services they provide (MLS®, Multiple Listing Service®)

Listing information last updated on April 4th, 2025 at 9:18am MDT