

Courtesy Of Michael J Waddell Of Real Broker

\$249,900 - 209 10518 113 Street, Edmonton

MLS® #E4425599

\$249,900

2 Bedroom, 2.00 Bathroom, 829 sqft
Condo / Townhouse on 0.00 Acres

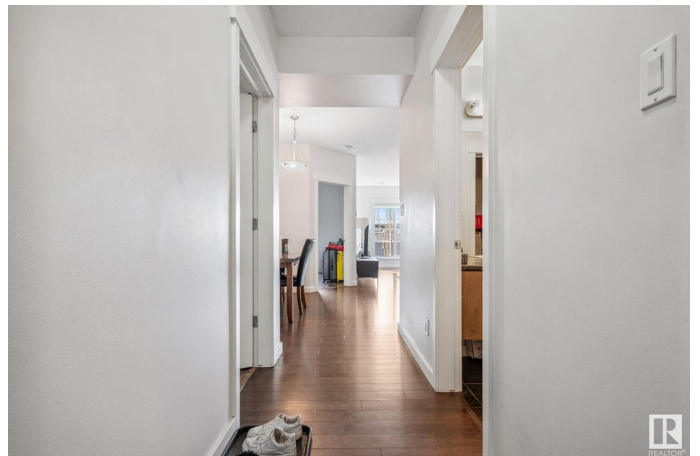
Queen Mary Park, Edmonton, AB

Experience modern urban living in this well-maintained 2-bedroom, 2-bathroom condo with underground parking in The Maxx. Situated on the 2nd floor, this bright and spacious unit offers an open-concept layout designed for comfort and functionality. The modern kitchen is equipped with quartz countertops, a generous eat-up island, and stainless steel appliances. Large windows in the living room flood the space with natural light. Step through the patio door onto your private west facing balcony, the perfect spot for morning coffee or evening relaxation. The primary bedroom features a 3-piece ensuite, while the second bedroom is ideal for guests, a home office, or extra living space. A 4-piece bathroom, in-suite laundry, and a dedicated storage room complete this stylish and functional unit. Located in downtown Edmonton, this condo is close to the Ice District, Grant MacEwan University, and all essential amenities. Enjoy the convenience of city living with everything you need right at your doorstep!

Built in 2010

Essential Information

MLS® #	E4425599
Price	\$249,900



Bedrooms	2
Bathrooms	2.00
Full Baths	2
Square Footage	829
Acres	0.00
Year Built	2010
Type	Condo / Townhouse
Sub-Type	Apartment High Rise
Style	Single Level Apartment
Status	Active

Community Information

Address	209 10518 113 Street
Area	Edmonton
Subdivision	Queen Mary Park
City	Edmonton
County	ALBERTA
Province	AB
Postal Code	T5H 0C6

Amenities

Amenities	Off Street Parking, On Street Parking, Air Conditioner, Detectors Smoke, Secured Parking, Security Door, Storage-In-Suite
Parking	Heated, Underground

Interior

Interior Features	ensuite bathroom
Appliances	Dishwasher-Built-In, Dryer, Garage Control, Microwave Hood Fan, Refrigerator, Stove-Electric, Washer, Window Coverings
Heating	Heat Pump, Natural Gas
# of Stories	6
Stories	1
Has Basement	Yes
Basement	None, No Basement

Exterior

Exterior	Wood, Brick, Stucco
Exterior Features	Public Transportation, Schools, Shopping Nearby
Roof	EPDM Membrane

Construction	Wood, Brick, Stucco
Foundation	Concrete Perimeter

Additional Information

Date Listed	March 13th, 2025
-------------	------------------

Days on Market	28
----------------	----

Zoning	Zone 08
--------	---------

Condo Fee	\$461
-----------	-------

DATA IS DEEMED RELIABLE BUT IS NOT GUARANTEED ACCURATE BY THE REALTORS® ASSOCIATION OF EDMONTON. COPYRIGHT 2025 BY THE REALTORS® ASSOCIATION OF EDMONTON. ALL RIGHTS RESERVED. Trademarks are owned or controlled by the Canadian Real Estate Association (CREA) and identify real estate professionals who are members of CREA (REALTOR®, REALTORS®) and/or the quality of services they provide (MLS®, Multiple Listing Service®)

Listing information last updated on April 10th, 2025 at 12:02pm MDT