

\$414,000 - 1855 28 St, Edmonton

MLS® #E4425527

\$414,000

3 Bedroom, 2.50 Bathroom, 1,412 sqft

Single Family on 0.00 Acres

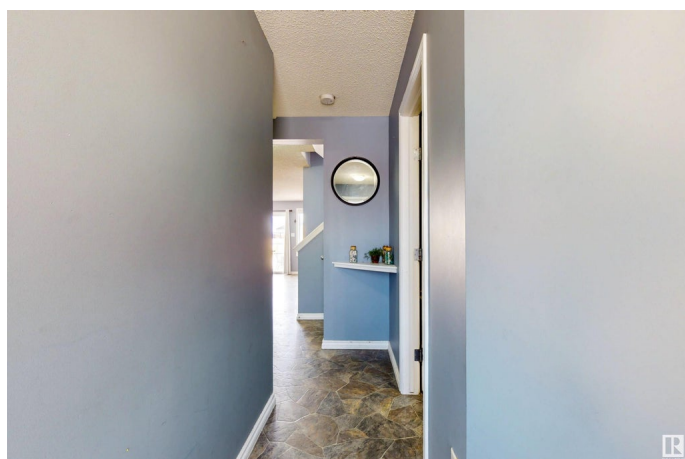
Laurel, Edmonton, AB

Beautiful Half Duplex in Laurel. This stunning home offers 3 spacious bedrooms, 2.5 bathrooms, a bonus room, and a single attached garage, making it perfect for families. The main floor features a bright living room with a cozy gas fireplace, a stylish island kitchen with an adjacent dining area that opens to the backyard. A convenient half bath completes this level. Upstairs, you'll find three generously sized bedrooms, a full bathroom, and a versatile bonus room. The massive primary suite boasts a 4-piece ensuite and a walk-in closet. Step outside to a fully fenced and landscaped backyard with a huge raised composite deck, perfect for outdoor gatherings. This home is backing onto a green space, offering privacy and scenic views. Located in a prime area, it is close to all essential amenities, including schools, grocery stores, Fresco, Browns Social house, The Meadows Rec Centre, bus services, and quick access to Anthony Henday.

Built in 2011

Essential Information

MLS® #	E4425527
Price	\$414,000
Bedrooms	3
Bathrooms	2.50



Full Baths	2
Half Baths	1
Square Footage	1,412
Acres	0.00
Year Built	2011
Type	Single Family
Sub-Type	Half Duplex
Style	2 Storey
Status	Active

Community Information

Address	1855 28 St
Area	Edmonton
Subdivision	Laurel
City	Edmonton
County	ALBERTA
Province	AB
Postal Code	T6T 0N5

Amenities

Amenities	Deck, No Animal Home, No Smoking Home
Parking	Single Garage Attached

Interior

Interior Features	ensuite bathroom
Appliances	Dishwasher-Built-In, Dryer, Oven-Microwave, Refrigerator, Stove-Electric, Washer, Window Coverings
Heating	Forced Air-1, Natural Gas
Fireplace	Yes
Fireplaces	Glass Door
Stories	2
Has Basement	Yes
Basement	Full, Unfinished

Exterior

Exterior	Wood, Stone, Vinyl
Exterior Features	Playground Nearby, Public Transportation, Shopping Nearby
Roof	Asphalt Shingles
Construction	Wood, Stone, Vinyl

Foundation Concrete Perimeter

School Information

Elementary Svend Hansen School

Middle T D Baker School

High W P Wagner School

Additional Information

Date Listed March 13th, 2025

Days on Market 37

Zoning Zone 30

DATA IS DEEMED RELIABLE BUT IS NOT GUARANTEED ACCURATE BY THE REALTORS® ASSOCIATION OF EDMONTON. COPYRIGHT 2025 BY THE REALTORS® ASSOCIATION OF EDMONTON. ALL RIGHTS RESERVED. Trademarks are owned or controlled by the Canadian Real Estate Association (CREA) and identify real estate professionals who are members of CREA (REALTOR®, REALTORS®) and/or the quality of services they provide (MLS®, Multiple Listing Service®)

Listing information last updated on April 19th, 2025 at 2:17pm MDT