

\$199,000 - 427 390 Windermere Road, Edmonton

MLS® #E4423808

\$199,000

2 Bedroom, 1.00 Bathroom, 619 sqft

Condo / Townhouse on 0.00 Acres

Windermere, Edmonton, AB

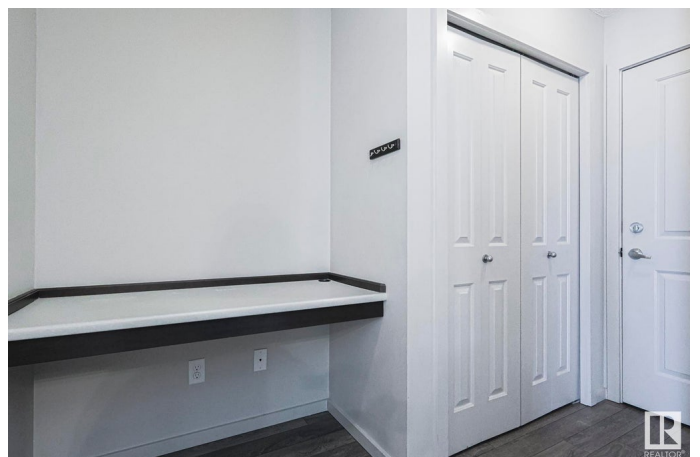
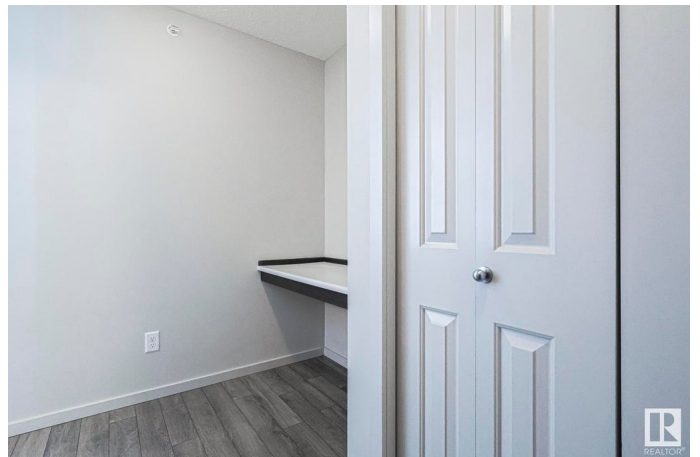
This cute & cozy condo is located in the perfect spot! It's on the top floor. Schools are across street. And, it is walking distance to shopping, restaurants, and transit. Inside, you will find 2 good sized bedrooms, a 4 piece bathroom & a built in desk space. The kitchen is fully functional with stainless steel appliances, and lots of counter space. This unit also comes with a stackable washer/dryer and a titled above ground stall. Perfect for first time buyers or investors! Immediate possession available.

Built in 2016

Essential Information

MLS® #	E4423808
Price	\$199,000
Bedrooms	2
Bathrooms	1.00
Full Baths	1
Square Footage	619
Acres	0.00
Year Built	2016
Type	Condo / Townhouse
Sub-Type	Lowrise Apartment
Style	Single Level Apartment
Status	Active

Community Information



Address	427 390 Windermere Road
Area	Edmonton
Subdivision	Windermere
City	Edmonton
County	ALBERTA
Province	AB
Postal Code	T6W 0R1

Amenities

Amenities	Detectors Smoke, No Animal Home, No Smoking Home, Parking-Visitor
Parking	Stall

Interior

Appliances	Dishwasher-Built-In, Microwave Hood Fan, Refrigerator, Stacked Washer/Dryer, Stove-Electric, Window Coverings
Heating	Baseboard, Water
# of Stories	4
Stories	4
Has Basement	Yes
Basement	None, No Basement

Exterior

Exterior	Wood, Stucco, Vinyl
Exterior Features	Golf Nearby, Playground Nearby, Public Transportation, Schools, Shopping Nearby
Roof	Asphalt Shingles
Construction	Wood, Stucco, Vinyl
Foundation	Concrete Perimeter

Additional Information

Date Listed	March 4th, 2025
Days on Market	38
Zoning	Zone 56
Condo Fee	\$320

DATA IS DEEMED RELIABLE BUT IS NOT GUARANTEED ACCURATE BY THE REALTORS® ASSOCIATION OF EDMONTON. COPYRIGHT 2025 BY THE REALTORS® ASSOCIATION OF EDMONTON. ALL RIGHTS RESERVED. Trademarks are owned or controlled by the Canadian Real Estate Association (CREA) and identify real estate professionals who are members of CREA (REALTOR®, REALTORS®) and/or the quality of services they provide (MLS®, Multiple Listing Service®)

Listing information last updated on April 11th, 2025 at 5:17pm MDT