

Courtesy Of Thomas J Lowe Of RE/MAX Edge Realty

\$629,900 - 2 Woodbridge Link, Fort Saskatchewan

MLS® #E4422270

\$629,900

5 Bedroom, 3.50 Bathroom, 1,938 sqft
Single Family on 0.00 Acres

Westpark_FSAS, Fort Saskatchewan, AB

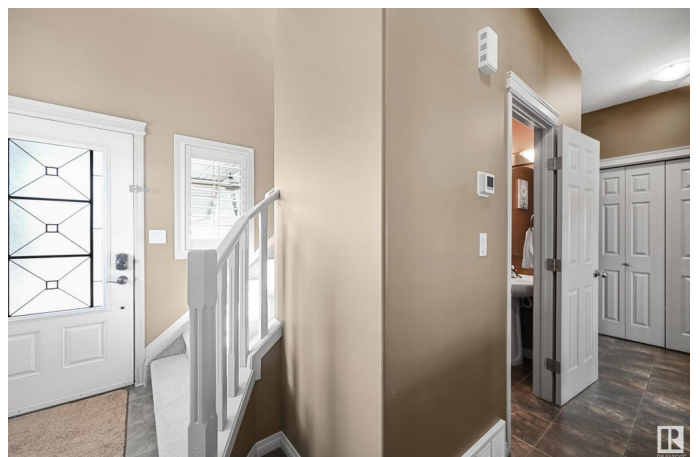
Welcome to this exceptional 1,938 sq. ft. home, situated on a sought-after corner lot in the prestigious Westpark community of Fort Saskatchewan. This immaculately maintained property offers five spacious bedrooms including a large primary bedroom and three and a half bathrooms and including an en-suite with double sinks. The fully finished basement adds extra living space, perfect for a home theater, gym, or recreation area. The home features a double attached 30 foot deep tandem heated garage, offering plenty of space for multiple vehicles as well as additional storage. Stay comfortable year-round with the added benefit of central air conditioning. Outside, the professionally landscaped yard provides a beautiful and tranquil environment, ideal for family gatherings or quiet relaxation. Being located on a corner lot, the property enjoys enhanced privacy and an abundance of natural light. This home combines luxury and functionality with a modern open layout and high-quality finishes throughout.

Built in 2009

Essential Information

MLS® # E4422270

Price \$629,900



Bedrooms	5
Bathrooms	3.50
Full Baths	3
Half Baths	1
Square Footage	1,938
Acres	0.00
Year Built	2009
Type	Single Family
Sub-Type	Detached Single Family
Style	2 Storey
Status	Active

Community Information

Address	2 Woodbridge Link
Area	Fort Saskatchewan
Subdivision	Westpark_FSAS
City	Fort Saskatchewan
County	ALBERTA
Province	AB
Postal Code	T8L 0H1

Amenities

Amenities	Air Conditioner, Deck, Exterior Walls- 2"x6", Front Porch, No Animal Home, No Smoking Home, Vinyl Windows
Parking Spaces	4
Parking	Double Garage Attached, Tandem

Interior

Interior Features	ensuite bathroom
Appliances	Air Conditioning-Central, Dishwasher-Built-In, Dryer, Garage Control, Garage Opener, Microwave Hood Fan, Refrigerator, Storage Shed, Stove-Gas, Vacuum System Attachments, Washer, Window Coverings, Garage Heater
Heating	Forced Air-1, Natural Gas
Fireplace	Yes
Fireplaces	Tile Surround
Stories	3
Has Basement	Yes
Basement	Full, Finished

Exterior

Exterior	Wood, Brick, Vinyl
Exterior Features	Corner Lot, Fenced, Flat Site, Fruit Trees/Shrubs, Golf Nearby, Landscaped, Level Land, No Back Lane, Picnic Area, Playground Nearby, Schools, Shopping Nearby
Roof	Asphalt Shingles
Construction	Wood, Brick, Vinyl
Foundation	Concrete Perimeter

Additional Information

Date Listed	February 20th, 2025
Days on Market	20
Zoning	Zone 62

DATA IS DEEMED RELIABLE BUT IS NOT GUARANTEED ACCURATE BY THE REALTORS® ASSOCIATION OF EDMONTON. COPYRIGHT 2025 BY THE REALTORS® ASSOCIATION OF EDMONTON. ALL RIGHTS RESERVED. Trademarks are owned or controlled by the Canadian Real Estate Association (CREA) and identify real estate professionals who are members of CREA (REALTOR®, REALTORS®) and/or the quality of services they provide (MLS®, Multiple Listing Service®)

Listing information last updated on March 12th, 2025 at 5:02pm MDT