

\$599,000 - 29 Rosa Crescent, St. Albert

MLS® #E4416235

\$599,000

3 Bedroom, 2.50 Bathroom, 1,851 sqft
Single Family on 0.00 Acres

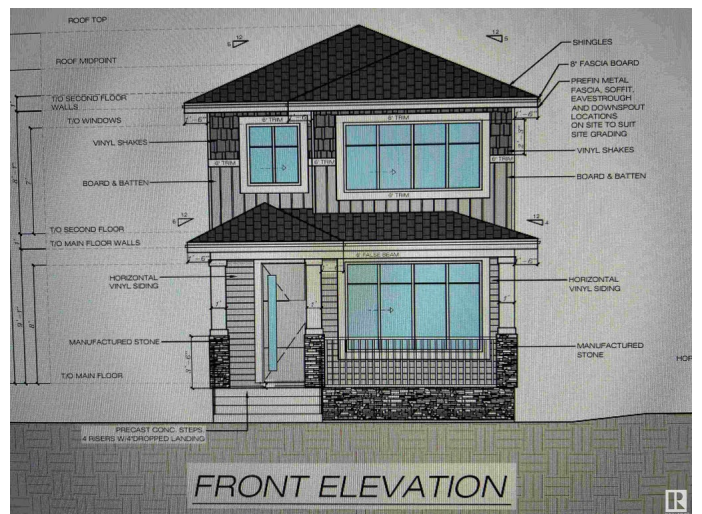
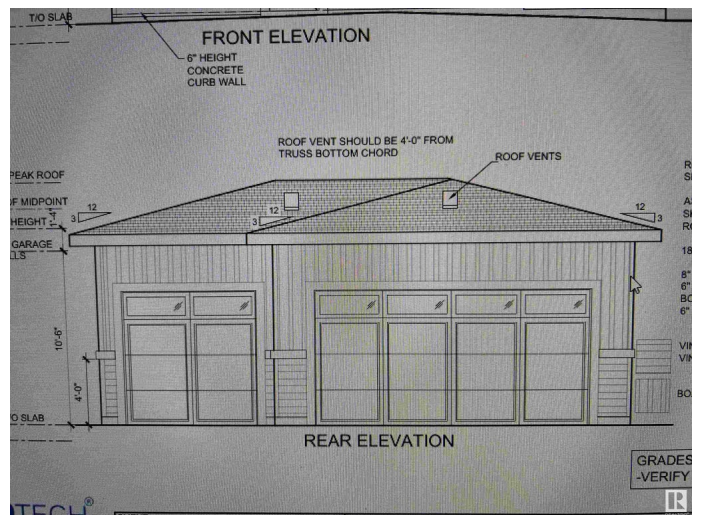
Riverside (St. Albert), St. Albert, AB

TRIPLE GARAGE. UNDER CONSTRUCTION. Huge pie lot with 75 feet of rear width. Option to Fit Four Car Garage in the back. 1850 SQ Ft SQFT brand new 2-storey. Separate entrance to basement. Option to Add 2 bedroom legal basement suite. Main floor den and bonus room on second floor. Open to above high ceiling at front entrance. Open floor plan with huge living room with huge size window 8ft high front entrance door. Electric fireplace with Mantle and wood work. Custom kitchen with huge dining area. Touch ceiling cabinets with built in hood fan. Soft close doors and drawers with quartz counter tops. Built in appliances option with gas cook top. Master Ensuite with standing shower with custom tiles and free standing soaker tub. Under mount sink with premium Quartz counter tops. Upgraded interior finishes with Maple hand rail to the second level. Feature wall in Master bedroom. High efficiency furnace and instant water heater system. Pre-cast concrete steps at front covered Veranda.

Built in 2024

Essential Information

MLS® # E4416235
Price \$599,000



Bedrooms	3
Bathrooms	2.50
Full Baths	2
Half Baths	1
Square Footage	1,851
Acres	0.00
Year Built	2024
Type	Single Family
Sub-Type	Detached Single Family
Style	2 Storey
Status	Active

Community Information

Address	29 Rosa Crescent
Area	St. Albert
Subdivision	Riverside (St. Albert)
City	St. Albert
County	ALBERTA
Province	AB
Postal Code	T8N 8B7

Amenities

Amenities	Deck, 9 ft. Basement Ceiling
Parking Spaces	6
Parking	Triple Garage Detached

Interior

Interior Features	ensuite bathroom
Appliances	Garage Opener, Hood Fan
Heating	Forced Air-1, Natural Gas
Fireplaces	Mantel
Stories	2
Has Basement	Yes
Basement	Full, Unfinished

Exterior

Exterior	Wood, Stone, Vinyl
Exterior Features	Corner Lot, Flat Site, Fruit Trees/Shrubs, Level Land, Park/Reserve, Playground Nearby, Ravine View, Schools, Shopping Nearby

Roof	Asphalt Shingles
Construction	Wood, Stone, Vinyl
Foundation	Concrete Perimeter

Additional Information

Date Listed	December 17th, 2024
-------------	---------------------

Days on Market	87
----------------	----

Zoning	Zone 24
--------	---------

DATA IS DEEMED RELIABLE BUT IS NOT GUARANTEED ACCURATE BY THE REALTORS® ASSOCIATION OF EDMONTON. COPYRIGHT 2025 BY THE REALTORS® ASSOCIATION OF EDMONTON. ALL RIGHTS RESERVED. Trademarks are owned or controlled by the Canadian Real Estate Association (CREA) and identify real estate professionals who are members of CREA (REALTOR®, REALTORS®) and/or the quality of services they provide (MLS®, Multiple Listing Service®)

Listing information last updated on March 14th, 2025 at 3:32pm MDT